



MURALPLAST INTERIOR-FLEX

A New Type of Matt Paint for Interior Walls and Ceilings

 Muralplast

MURALPLAST INTERIOR-FLEX

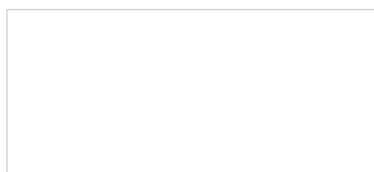
Elastomeric Crack-Bridging
Emulsion Paint



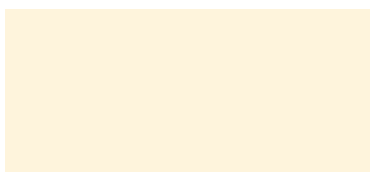
Specially formulated for coating interior walls and ceilings, **Muralplast Interior-Flex** is an elastomeric matt emulsion paint that will bridge hairline cracks. It will also flex with the substrate preventing further cracking that would otherwise occur with conventional matt emulsion paint.

Easily applied by brush, roller or spray, Interior-Flex provides a flexible, microporous, breathable coating when dry that can be wiped clean as required. It is touch dry in 2 hours and can be recoated after 4 hours in normal conditions.

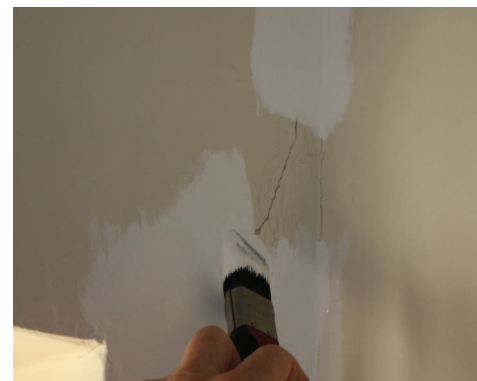
It is available in Brilliant White and Magnolia as standard, with other colours available on request subject to minimum order quantities.



Brilliant White



Magnolia



PREPERATION

Prepare and fill large cracks.
Brush Interior-Flex into hairline cracks and allow to dry.



FINISH

Brush, roll or spray Interior-Flex over the prepared ceilings and walls.

Due to the limitations of the printing process, the colours shown are intended as guides only.
Please contact **Muralplast** for further information and application advice.



Muralplast is a trading division of S. Lucas Limited, part of the S. Lucas Group.

Muralplast • 11 Invicta Business Park • London Road • Wrotham • Kent • TN15 7RJ • T +44 (0)1732 884 022 • F +44 (0)1732 884 033 www.muralplast.com